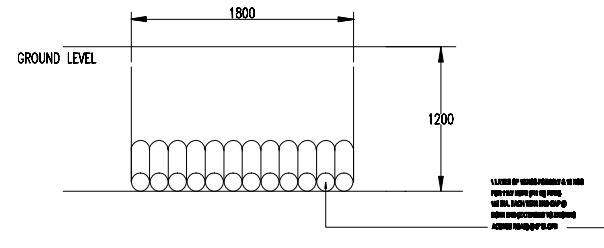
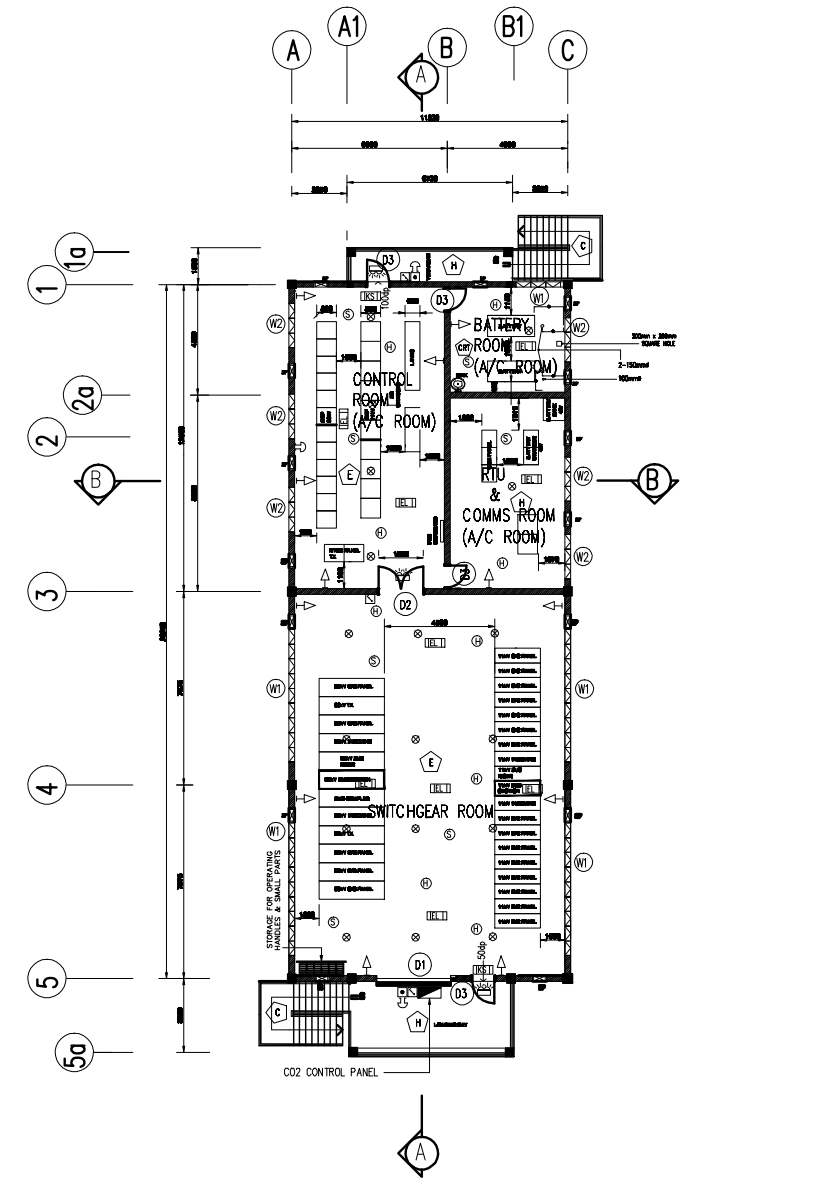


GROUND FLOOR PLAN
Scale : 1:100

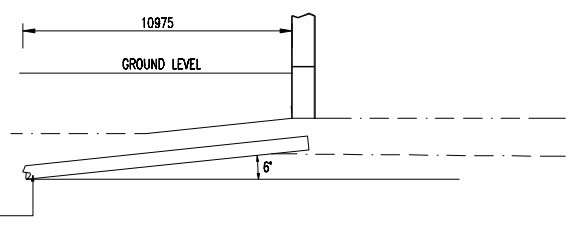


SECTION Y-Y

DETAILS OF PIPE SLEEVES



FIRST FLOOR PLAN
Scale : 1:100



SECTION A-A

CEILING SCHEDULE

LOCATION	TYPE OF CEILING MATERIAL
SWITCHGEAR ROOM	1200x600x3.2mm THK. SUSPENDED UAC "SUPERFLEX" OR "DECOCEL" CEILING WITH 50mm THK. APPROVED SOUND PROOF MATERIAL
CONTROL ROOM 1 BATTERY ROOM RTU & COMMS ROOM	1200x600x12mm THK. SUSPENDED GYPSUM BOARD CEILING (ARISTRONG OR SAKURA)
ROOF EAVE LOADING BAY	3.2mm THK. SUSPENDED UAC-DURAVENT CEILING

DOORS SCHEDULE

TYPE	DESCRIPTION
D1	3000mm (W) x 3500mm (H) - heavy duty colourbond roller shutter (1.0mm THK)
D2	1800 (W) x 2100 (H) double leaves solid timber door with 2 hour fire rated
D3	900mm (W) x 2100mm (H) - single leaves solid timber door with 2 hour fire rated

WINDOW SCHEDULE

TYPE	DESCRIPTION
W1	5400mm (W) x 600mm (H) - 4 High Baye 6mm Thk Glass With Aluminium Frame Top Hung Window With Vermin Wire Mesh Mosquito Netting Fixed Intensity
W2	1800mm (W) x 600mm (H) - 7 High Baye 6mm Thk Glass With Aluminium Frame Top Hung Window With Vermin Wire Mesh Mosquito Netting Fixed Intensity
W3	500mm (W) x 900mm (H) - Precast Cement Vent Block With Ant Vermin Aluminium Wire Mesh Mosquito Netting Fixed Intensity
W4	250mm (W) x 900mm (H) - Precast Cement Vent Block With Ant Vermin Aluminium Wire Mesh Mosquito Netting Fixed Intensity
W5	600mm (W) x 600mm (H) - 1 High Baye 6mm Thk Glass With Aluminium Frame Top Hung Window With Vermin Wire Mesh Mosquito Netting Fixed Intensity

- LEGEND :**
- ☐ FLOOR FINISHES
 - ☐ 200x200x6mm THK. CHEMICAL RESISTANT HEAVY DUTY HOMOGENEOUS FLOOR TILES
 - ☐ 200x200x6mm THK. INDUSTRIAL HEAVY DUTY HOMOGENEOUS FLOOR TILES
 - ☐ CEMENT RENDER WITH GRANULITH FLOOR HARDENER AND APPROVED INDUSTRIAL PAINT
 - ☐ P310 POLYSEPT SEPTIC TANK COMPLETE WITH FILTER BED
 - ☐ CEMENT RENDER
 - ☐ CEMENT RENDER WITH EPOXY RESIN COATING
 - ☐ 4kg CO2 PORTABLE FIRE EXTINGUISHER
 - ☐ SMOKE DETECTOR
 - ☐ HEAT DETECTOR
 - ☐ MANUAL CALL POINT
 - ☐ 150M, 24 D.C ALARM BELL
 - ☐ RED/GREEN FLASHING LIGHT INDICATOR
 - ☐ MANUAL KEY SWITCH
 - ☐ SURFACE-MOUNT 1 X 10W EMERGENCY LIGHT C/W 4hrs BACK-UP Ni-Cd BATTERY & CHARGER TO BOMBA'S APPROVED TYPE
 - ☐ SURFACE-MOUNT 2 X 10W KELLUAR SMOKE C/W 4hrs BACK-UP Ni-Cd BATTERY & CHARGER TO BOMBA'S APPROVED TYPE
 - ☐ CO2 DISCHARGE NOZZLE
 - ☐ CO2 PIPING
 - ☐ 300mm EXHAUST FAN

NOTES :

ALL UNCOVERED OPENING ON FIRST FLOOR TO BE COVERED WITH CHEQUERED PLATE



JAB. PERANCANGAN DAN PEMBANGUNAN SISTEM (PEMBAHAGIAN)

TAJUK LUKSAN :
PPU 30/11KV DOUBLE STOREY (DOUBLE TRANSFORMER)

DISEDIAKAN:	U/KAJ 1	U/KAJ 2
DILAKSI:	HAROLD SINPONG	
DISEMBAK:	QADAFI ABDULLAH BAKERAH	
DILULUSKAN:	SITI SARAH JOHANA MOHD SAD	
KELUARAN ASAL:	JPPSP	
TARIKH:	23/09/2011	
SKALA:	1:100	
NO. LUKSAN:	SES3 ARCH 010/A	

MUKA SURAT